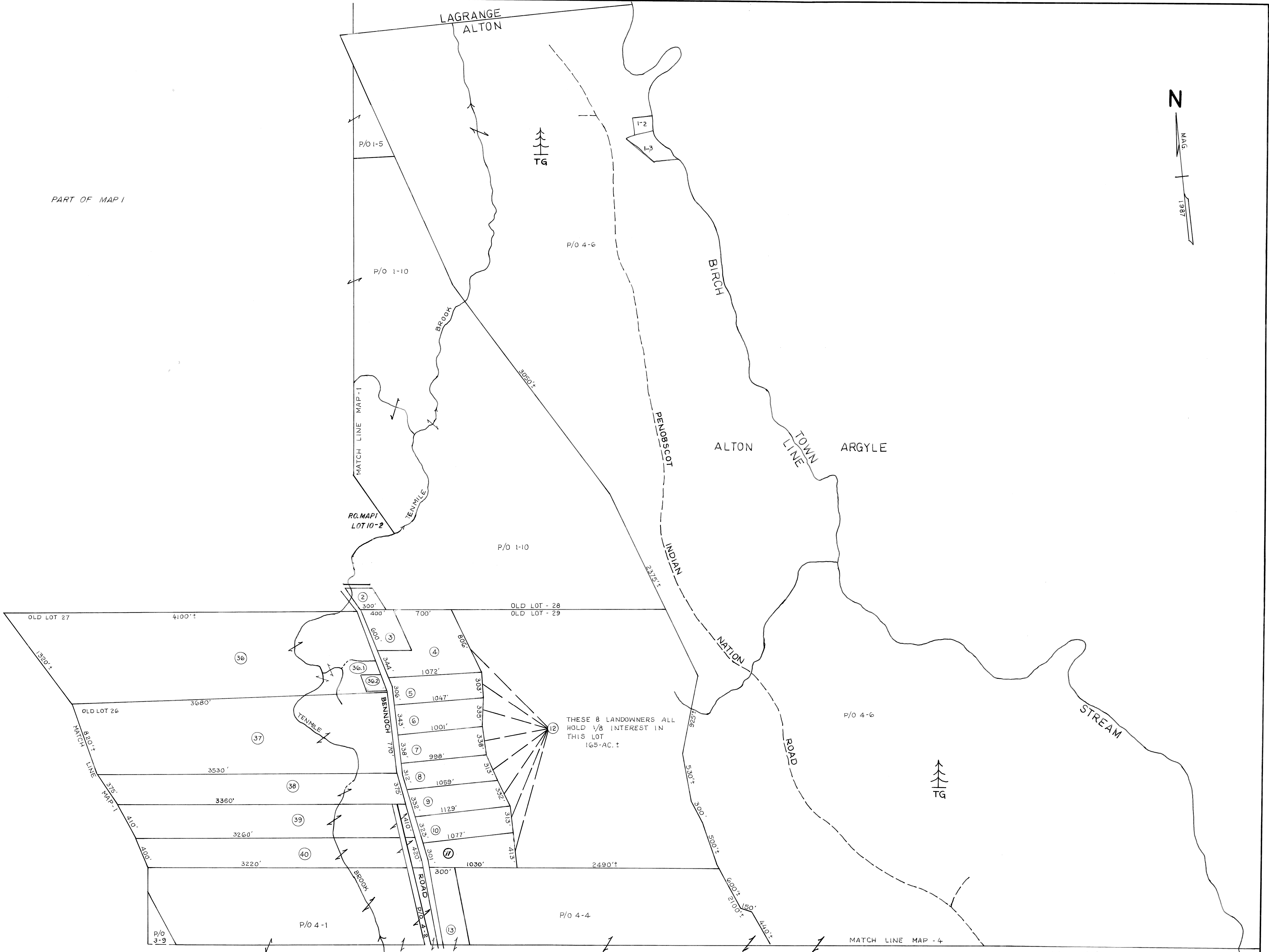


PART OF MAP 1



For Assessment Purposes Only  
Not To Be Used For Conveyances

PREPARED TAX MAPS 1988  
Revised by Donald L. Leavitt 1997  
REVISED BY: H.R. DICKEY 2002

PROPERTY TAX MAP  
**TOWN OF ALTON**  
Penobscot County, Maine  
By: Forrest Smart, Surveyor  
SCALE: 1" = 500'